

intellitiles  
**bold** 

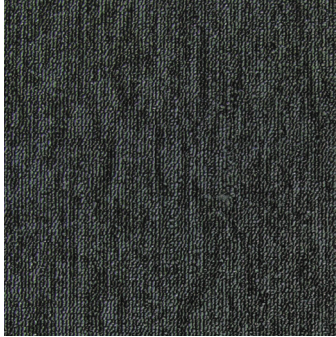


intelligent technology  
combined with smart benefits

innovation & inspiration

| *Signature*<sup>®</sup>  
floorconcepts

for total flexibility & cost efficiency



**definite 3112**



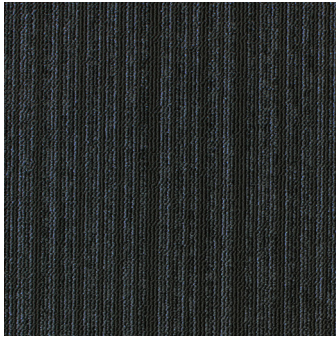
**prominent 4101**



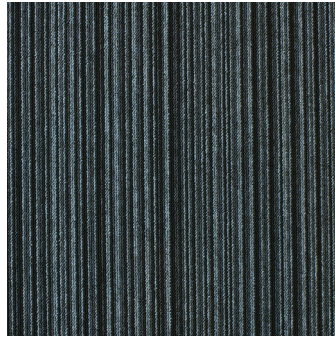
**audacious 1815**



**resolute 0725**



**intrepid 0671**



**forward 0670**

**product construction** intelli tiles, bold  
**yarn/fibre** level loop pile  
**pile weight** solution dyed nylon  
**pile height** 550g/m<sup>2</sup>  
**gauge** 3.5mm  
**tile size** 1/10  
**total thickness** 500mm x 500mm  
**carton size** 6.5mm  
 5sqm

**total weight** 4.6kg/m<sup>2</sup>  
**dimensional stability** <0.15%  
**backing** Thermo Bak™  
**electrostatic propensity** <2.0kv  
**fire rating ISO 9239.1** 5.0 kw/m<sup>2</sup> critical radiant flux  
**recommended adhesive** RLA Polymers GS300  
**installation method** quarter turn  
**co-ordinates with availability** all intelli carpet tiles  
 in stock

**total weight** 4.6kg/m<sup>2</sup>  
**dimensional stability** <0.15%  
**backing** Thermo Bak™  
**electrostatic propensity** <2.0kv  
**fire rating ISO 9239.1** 5.0 kw/m<sup>2</sup> critical radiant flux  
**recommended adhesive** RLA Polymers GS300  
**installation method** quarter turn  
**co-ordinates with availability** all intelli carpet tiles  
 in stock



**Declare.**

*Signature*<sup>®</sup>  
 floorconcepts

au 03 9401 0888  
 nz 0800 150 555  
[signaturefloors.com.au](http://signaturefloors.com.au)  
[signaturefloors.co.nz](http://signaturefloors.co.nz)

**Terms & Conditions:** Specifications are subject to manufacturing tolerances and may be changed without prior notice. Dye lots may vary in colour from sample and between production lots. All product purchases are subject to Signature Floorcoverings Standard Terms & Conditions of Sale. Please refer to our Installation Guideline, Maintenance Manual and Warranty Document for further clarification.

This warranty is in addition to and does not affect your statutory rights. Our goods come with guarantees that cannot be excluded under the Australian Consumer Law/NZ Consumer Guarantees Act 1993. You are entitled to a replacement or refund for a major failure and compensation for any other reasonably foreseeable loss or damage. You are also entitled to have the goods repaired or replaced if the goods fail to be of acceptable quality and the failure does not amount to a major failure.

Please refer to our warranties on: [www.signaturefloors.com.au](http://www.signaturefloors.com.au) [www.signaturefloors.co.nz](http://www.signaturefloors.co.nz) 06/2018©